



**535** - A limitless family  
cruiser





- is a bright and spacious family boat. Large salon with lots of natural light. Two beautiful cabins with 5 permanent beds. Toilet room with shower cubicle.







*FLY: The same clever solutions as the panorama. Go upstairs in the nice weather, and let the social flybridge speak for itself*







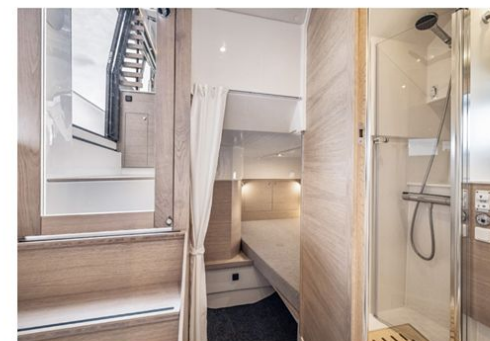
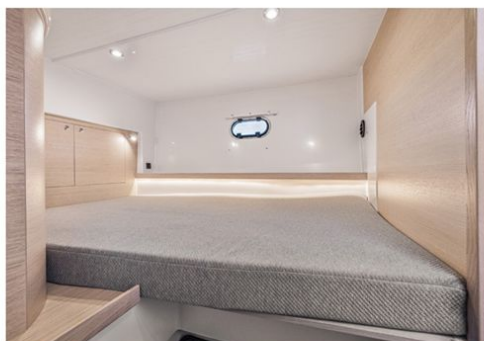
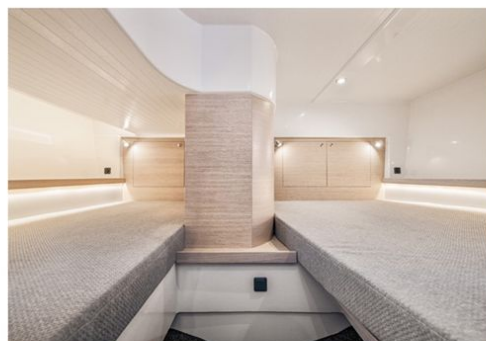
- seamless integration between the aft deck and the interior when you open the hinged sliding door  
- come aboard and be impressed







- bright and nicely decorated cabins, with ample space for what you need to hang or put away.





## Technical data:

Crew, CE/Design category B .....	6 pers
Crew, CE/Design category C .....	10 pers
Berths .....	2 + 2 + 1 pers
Length .....	10,60 m
Beam .....	3,52 m
Total height excl. mast & rudder stem .....	3,75 m
Total height, incl. mast & rudder stem .....	4,90 m
Weight, std. equipped, lightship .....	6680 kg
Draft, max loaded .....	1,15 m
Bridge clearance excl. mast, std. equipped, lightship .....	2,95m
Bridge clearance w/mast, std. equipped, lightship .....	3,90 m
Tank capacity diesel .....	350+350 liter
Tank capacity cold water .....	280 liter
Tank capacity hot water .....	40 liter
Tank capacity waste water .....	140 liter
Engine installation .....	Single. Straight shaft

Values may vary depending on equipment and adaptations.

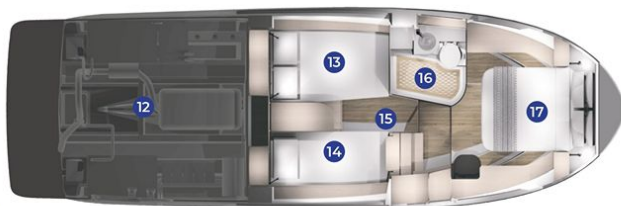
- 1) Storage space for fenders and ropework
- 2) Electric folding roof with dual fabric above aft deck
- 3) Large electrically openable sunroof
- 4) Side door from the helm position
- 5) Wide, lowered side deck on starboard side



- 6) Bathing platform with integrated hidden anchor solution
- 7) Large settee with storage
- 8) 5.3 sqm aft deck
- 9) Pantry with oven, cooking facilities, double sink and option for 32" TV at the back
- 10) Reversible seat in the salon
- 11) Adjustable helm seat



- 12) Large cargo space under the deck
- 13) Bed space 120x200
- 14) Bed space 90x200
- 15) Optional door for centre-cabin
- 16) Head with shower
- 17) Main bed with access from both sides



## Technical data: S35F



Total height, excl. mast & rudder stem .....	4,20
Total height, incl. mast & rudder stem .....	5,65
Weight, std. equipped, lightship .....	6830
Draft, max load .....	1,15
Bridge clearance excl. mast, std. equipped, lightship .....	3,55
Bridge clearance w/mast, std. equipped, lightship .....	4,65

Values may vary depending on equipment and adaptations.

- 18) Spacious and practical flybridge with option for sunbed aft.



## Find your nearest dealer:

	Norway	 Ar-båtsfolk, for båtsfolk	<b>Buholmen Båt AS</b> +47 45 66 71 58	post@buholmen.no www.buholmen.no
	Norway		<b>Marine Team AS</b> +47 45 27 27 00	post@marineteam.no www.marineteam.no
	Norway		<b>Maritim Drift AS</b> +47 40 62 62 40	post@maritimdrift.no www.maritimdrift.no
	Norway	 SHAPED BY THE NORTH SEA	<b>Viknes Båt og Service AS</b> +47 56 15 22 20	firmapost@viknes.no www.viknes.no
	Norway		<b>Viknes Sør AS</b> +47 957 23 133	torstein@viknes-sor.no www.viknes-sor.no
	Sweden		<b>Öckerö Båtvär AB</b> +46 70 557 18 46	goran@ockeroatvarv.se www.ockeroatvarv.se
	Denmark		<b>Kronborg Marine Bådsalg</b> +45 40 63 48 08	john@kronborgmarine.dk www.kronborgmarine.dk
	Uk		<b>Fine Design Marine</b> +44 (0)1202 465 327	boats@finedesign-marine.co.uk www.finedesign-marine.co.uk
	Estonia		<b>Premium Boats OÜ</b> +37 25077992	info@premiumboats.ee www.premiumboats.ee
	Germany		<b>Yachtsport Eckernförde</b> +49 - 4351 - 75 27 34	info@yse.de www.yse.de
	Netherlands	<b>Melior Yachts</b>	<b>Melior Yachts</b> +31(0)6 2000 2312	info@melioryachts.com www.melioryachts.com
	Croatia		<b>Coolway</b> +38 5989831351	coolway@coolway.hr www.coolway.hr
	Greece		<b>Dynamic Boats</b> +30 210 96 56 641	welcome@dynamicboats.com DynamicBoats.com
	Turkey		<b>SRC Marin</b> +90 216 338 24 61	info@sarica.com.tr www.sarica.com.tr
	Japan		<b>Okazaki Yachts</b> +81 0798-32-0202	info@yachts.co.jp okazaki.yachts.co.jp
	New Zealand		<b>Charlie Bravo Boat Co.</b> +64 22 542 1566	info@charliebravo.co.nz charliebravo.co.nz

Viknes offers a complete series of boats from 26 to 39 feet. Among our models there are boats for every taste and application. Viknes is proud to handle all phases of in-house development. Everything from construction and design to mold making and production is taken care of by our skilled employees. In this way, our experience is your security! Viknes Båt og Service AS, Postboks 33, N-5321 Kleppstø, NORWAY. Bank Nordea 6515.06.01902 Org.nr NO948 126 648 MVA [www.viknes.no](http://www.viknes.no)



